



345 Carlingview Drive
Toronto, Ontario
CANADA M9W 6N9
Tel.: 416.734.3300
Fax.: 416.231.1626
Toll Free: 1.877.682.8772
www.tssa.org

December 01, 2019

KEVIN MILLER
PHOENIX FORGE GROUP
800 FRONT ST
CATASAUQUA PA 18032-2343
US

Service Request Type.: BPV-National AB
Service Request No.: 2697916
Your Reference No.:
Registered to.: PHOENIX FORGE GROUP

Dear KEVIN MILLER,

Please find enclosed the original response from AB
registered under the CRN No.: 0H00693.92.

As all jurisdictional fees are handled by the Technical Standards and Safety Authority (TSSA), you do not pay any
jurisdictions directly.

Should you have any questions or require further assistance, I will be happy to assist you.
For general enquiries, please contact a Customer Service Advisor at 1.877.682.TSSA (8772) or e-mail
customerservices@tssa.org. When contacting TSSA regarding this file, please refer to the Service Request number
provided above.

Yours truly,

Tanya Francis
Administrative Assistant_ BPV Engineering
Tel. : 416-734-3423
Fax : 416-231-6183
Email : tfrancis@tssa.org

November 01, 2019

Attention: Joanna Karpinski
TECHNICAL STANDARDS & SAFETY AUTHORITY
345 CARLINGVIEW DRIVE
TORONTO, ON M9W 6N9

The design submission, tracking number 2019-06948, originally received on October 10, 2019 was surveyed and accepted for registration as follows:

CRN : 0H00693.92 **Accepted on:** November 01, 2019
Reg Type: RENEWAL **Expiry Date:** November 01, 2029
Drawing No. : CRN RENEWAL, CATALOGUE TANK AND CYLINDER FITTINGS As Noted
Fitting type: FORGED FITTINGS
Design registered in the name of : PHOENIX FORGE GROUP

The registration is conditional on your compliance with the following notes:

As indicated on AB-41 Statutory Declaration form and submitted documentation, the code of construction are SECTION VIII, DIV. 1 and SECTION IV.

- *This registration is valid only for fittings fabricated at the location(s) covered by the QC certificate attached to the accepted AB-41 Statutory Declaration form.*
- *This registration is valid only until the indicated expiry date and only if the Manufacturer maintains a valid quality management system approved by an acceptable third-party agency until that date.*
- *Should the approval of the quality management system lapse before the expiry date indicated above, this registration shall become void.*

Couplings Series 3-843D page 11, and lugs page 12 are not part of the registration.

An invoice covering survey and registration fees will be forwarded from our Revenue Accounts.

Enclosed are stamped prints for your reference.

If you have any question don't hesitate to contact me by phone at (780) 433-0281 ext 3330 or fax (780) 437-7787 or e-mail grynchuk@absa.ca.

Sincerely,



GRYNCHUK, MILLA, P. Eng.
DOP Cert. No. D00005217

STATUTORY DECLARATION Registration of Fittings

I, Kevin Miller, Quality Manager of The Phoenix Forge Group located at 800 Front St., Catsaunqua, PA 18032

In this space, show facsimile of manufacturer's logo or trademark as it will appear on the fitting. See attached

do solemnly declare that the fittings listed hereunder, which are subject to the Safety Codes Act (check one)

- comply with the requirements of ASME BPVC Code Sec 2, 4, + 8 which specifies the dimensions, materials of construction, pressure/temperature ratings and identification marking of the fittings, or are not covered by the provisions of a recognized North American standard and are therefore manufactured to comply with

I further declare that the manufacture of these fittings is controlled by a quality control program which has been verified by the following authority, DNV-GL Business Assurance as being suitable for the manufacture of these fittings to the stated standard. The fittings covered by this declaration, for which I seek registration, are

Tank + Cylinder Fittings (brief description of fittings)

In support of this application, the following information, calculations and/or test data are attached:

See attached catalog pg 1-14

DECLARED before me at Catsaunqua in the County of Lehigh this 19 day of June, 2019

(print) Melissa A Reimer (a Commissioner of Oaths or Notary Public)

Commonwealth of Pennsylvania - Notary Seal Melissa A. Reimer, Notary Public Lehigh County My commission expires April 11, 2022 Commission number 1282898 Member, Pennsylvania Association of Notaries

(sign) Melissa A Reimer (signature of applicant)

For ABSA Office Use Only:

NOTES:

To the best of my knowledge and belief, the application meets the requirements of the Safety Codes Act and CSA Standard B51, Clause 4.2, and is accepted for registration in Category H

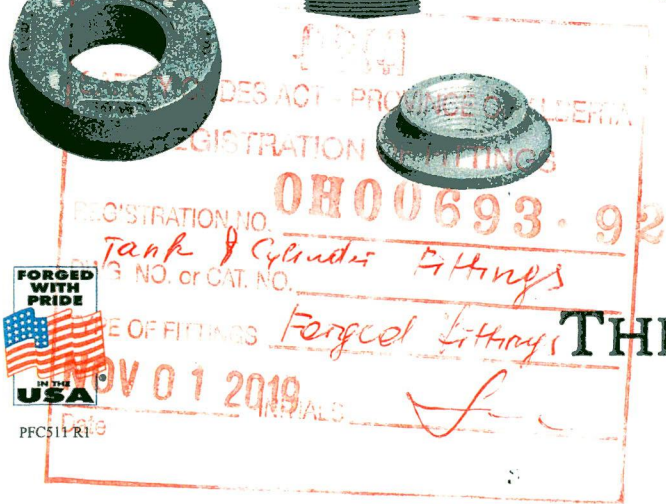
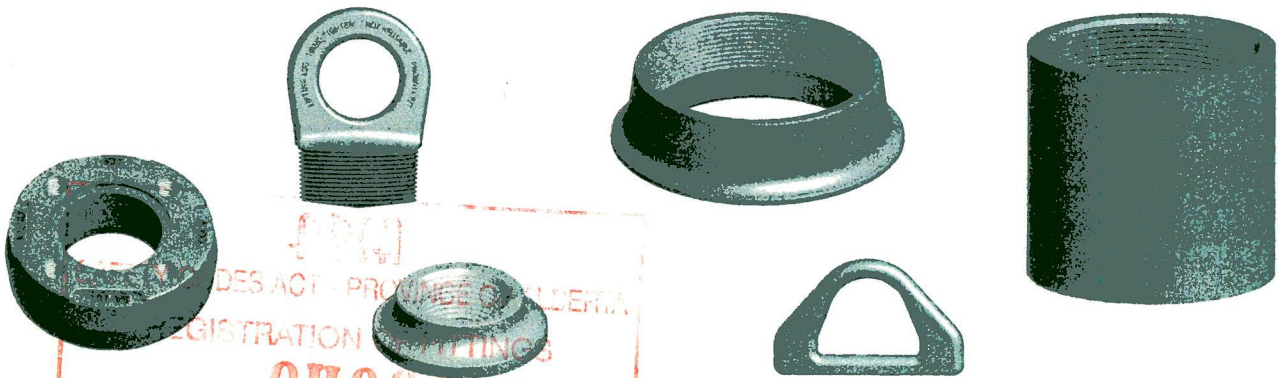
Registration Number: OH00693.92 (Signature of the Administrator/SCO)

Date Registered: NOV 01 2019 Expiry Date: 2029-11-01

CRN Renewal



Tank and Cylinder Fittings



THE PHOENIX FORGE GROUP
Commanding a Higher Standard SM



THE PHOENIX FORGE GROUP

Commanding a Higher Standard SM

CAPITOL MANUFACTURING COMPANY*
Crowley, LA

PHOENIX FORGING COMPANY*
Catasauqua, PA

CAPPRODUCTS Ltd.*
Vanastra, ON

PHOENIX HOTFORM COMPANY*
Allentown, PA

CONDUIT PIPE PRODUCTS CO.*
W. Jefferson, OH

***ISO 9001:2008**

BARCO INDUSTRIES, INC.
Reading, PA

OUR PROMISE TO YOU

We promise to provide you with quality forged products, delivered on time and at a fair price. We can make this promise because only Phoenix offers you experience dating back to the 19th Century, state-of-the-art 20th Century manufacturing technologies, and 21st Century innovation.

When your production plans call for Forged Steel Fittings, Trans-O-Con transition pipe connections, Tank and Cylinder Fittings or custom forged products—contact The Phoenix Forge Group.

THE PHOENIX LEADERSHIP ADVANTAGE

Phoenix Forging is the nation's largest producer and distributor of Tank & Cylinder Fittings. It pays to deal with the industry leader.

- **FULL LINE SUPPLIER**— Forged Steel Fittings—All Standard Styles & Sizes: Unions, Lifting Lugs, LPG Gage Adapters, Couplings, Thread Protectors, Pressed Steel Fittings and Custom Products.
- **LARGE INVENTORY**— Multi-Million Dollar Inventory and Next Day Shipment
- **CUSTOM DESIGN**— Our technical engineers, assisted by CAD/CAM capability, are available to assist you.
- **TECHNICAL SUPPORT**— Statistical calculations regarding application criteria available upon request.
- **COMPUTER SERVICES**— Computer assisted order entry, inventory control, database management system.
- **QUALITY ASSURANCE PROGRAM**— Material qualification, equipment maintenance and upgrading, statistical process control and gauge control are all included in a concentrated program to ensure production of superior quality products. - ISO 9001 CERTIFICATION -
- **EXPERIENCE**— Phoenix has over 100 years experience in manufacturing a wide variety of products.
- **COMMUNICATIONS**— State of the Art order placement & communications systems, including EDI, XML & e-commerce.
- **ELECTRONIC MTR's**— Immediate access to MTR's at www.phoenixforge.com.
- **BAR CODING**— All product has a standard Phoenix barcode. Custom barcoding available on request.
- **UL RECOGNIZED PARTS**
- **CANADIAN REGISTRATION NUMBERS**— View and download CRN's at www.phoenixforge.com.



CONTENTS

Pressure Temperature Ratings	3,4	Composite Flat Flange with Pilot	9
Flat Type	5	Composite Curved Flange with Pilot	9
Standard Heavy Curved Type with Pilot	5	Hi-Five	9
Extra Heavy Flat Type Series	5	Low Profile	9
Standard Flat type with Pilot	6	Monitoring Flange	9
Stainless Steel Flat Type with Pilot	6	Float Gage Adapters	9
Boiler Flange with Pilot	6	Couplings	10
Lightweight Flat Type with Pilot	7	Lifting Lugs	11
Modified Lightweight Flat Type with Pilot	7	Pressed Steel Fittings	12
Trimmed Flat Type with Pilot	7	Thread Protectors	12
L.P.G. Flange with Pilot	8	The Isolator Bushing	12
Coupling Flat Type Flange with Pilot	8		
Coupling Type Flat	8		

SPECIFICATIONS

Our flanges are manufactured in accordance with Underwriter's Laboratories and ASME Boiler and Pressure Code Section II and applicable portions of Section IV and VIII.

Material Specifications comply with ASTM A105/ASME SA105, ASTM A181-70A, SME SA 181-70 or applicable DOT specifications.

Our standard threaded product complies with ANSI/ASME B1.20.1-1983.

NPTF (Dry Seal) threads as well as other special threads are available.

Certifications are provided on the web at www.phoenixforge.com.

Canadian Provincial Registration numbers are available on the web at www.phoenixforge.com.

IDENTIFICATION AND MARKING

During the forging process, all Phoenix products are marked with the size, heat of steel, part number and Phoenix identification. These figures remain visible after installation.

Dimensional Tolerances—Hot Forged Welding Flanges

THICKNESS

Pipe Size: 1/8" to 1 1/2"	± 1/32"
Pipe Size: 2" to 4"	+ 3/64" -1/32"
Pipe Size: 5" to 8"	+ 1/16" -1/32"

OUTSIDE DIAMETER

Pipe Size: 1/8" to 1 1/4"	± 1/64"
Pipe Size: 1 1/2" to 3"	+ 1/32" -1/64"
Pipe Size: 3 1/2" to 6"	± 1/32"
Pipe Size: 8"	+ 3/64" -1/32"

DIAMETER OF PILOT

Pipe Size: 1/8" to 1"	± 1/32"
Pipe Size: 1 1/4" to 4"	+ 3/64" -1/32"

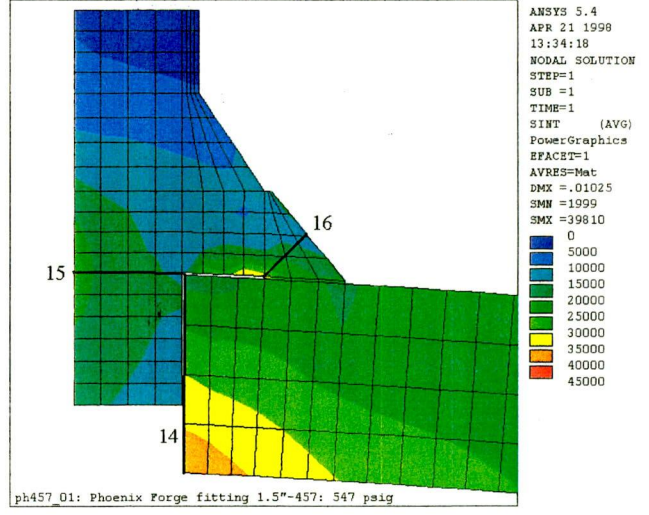
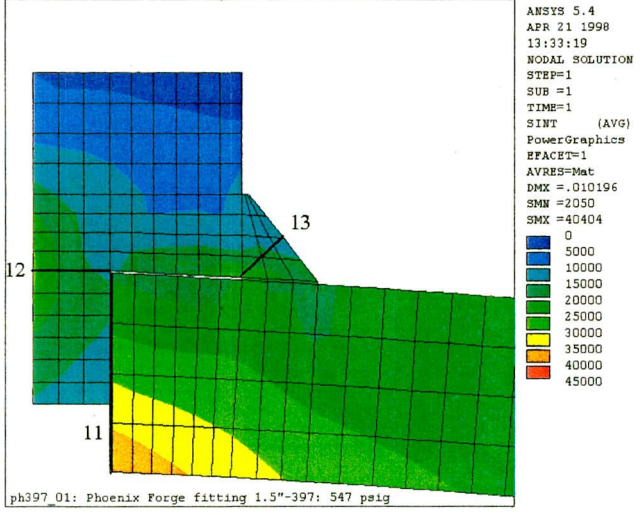
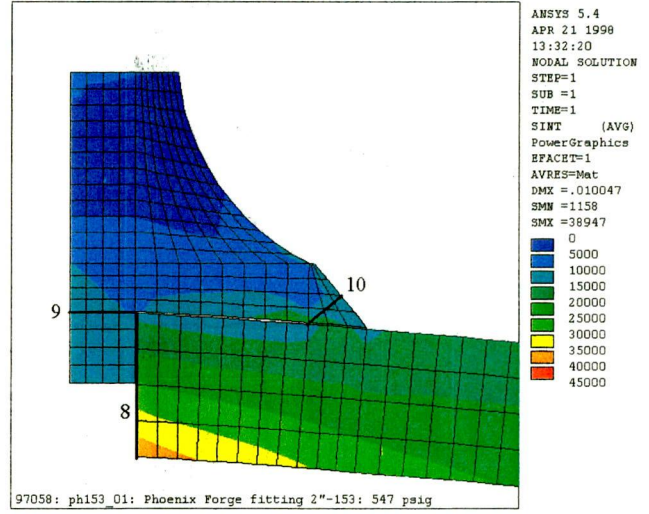
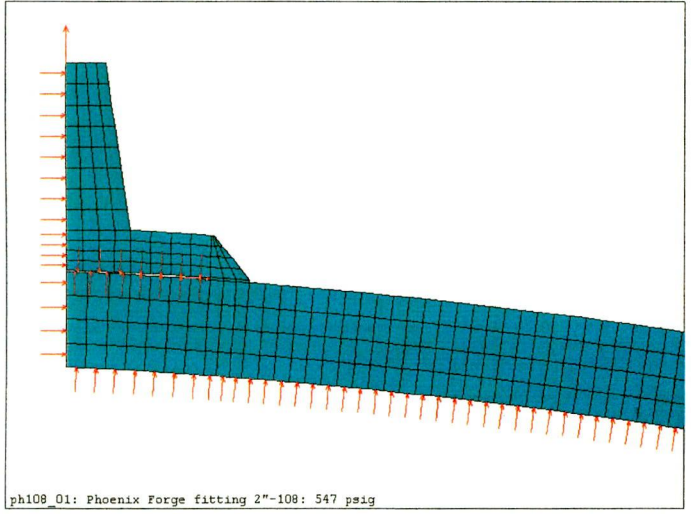
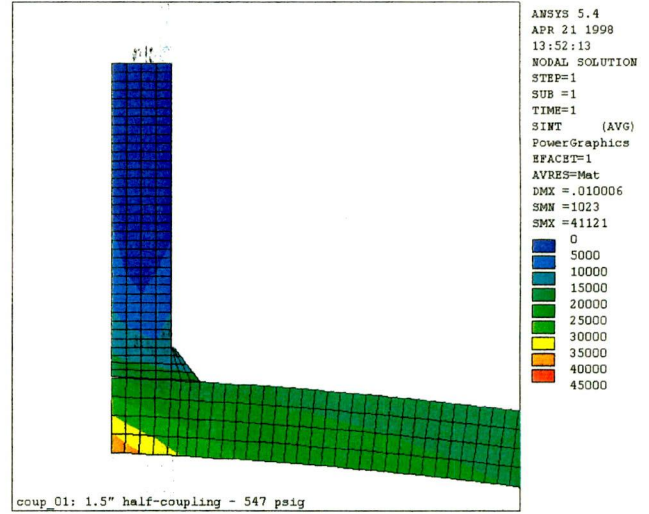
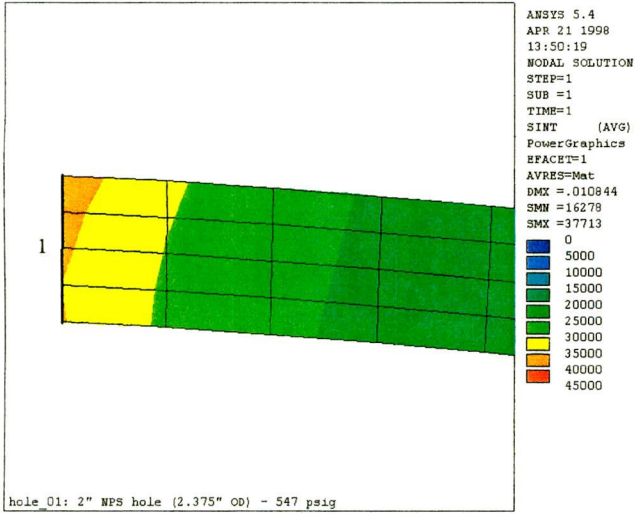
THREADING

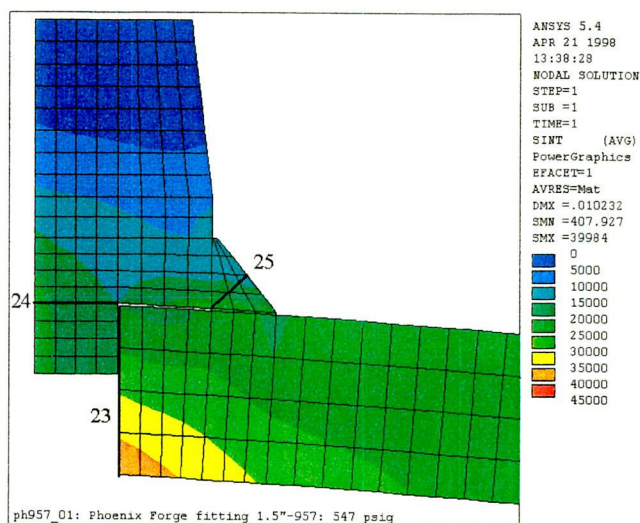
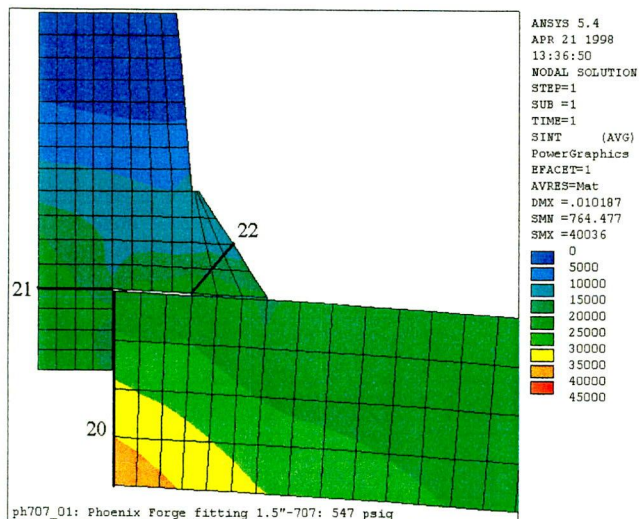
All sizes ± One Thread

Phoenix Forged Welding Flanges and other related products are also available.

- | | |
|---------------------------|---------------------------------|
| 1. Special Threaded Parts | 5. Machined "O" - Ring Products |
| 2. Stainless Steel | 6. Evacuation Dip Tubes |
| 3. Custom Designed Parts | 7. Dielectric Nylon Fittings |
| 4. Full Coupling Line | 8. Screw Machine Parts |

0200693-92





Phoenix Pressure Vessel Fittings - Pressure Temperature Ratings Basis

The finite element analysis summarized in the above figures were performed to confirm the strength-equivalence between a standard Phoenix Forge Group ASME B16.11, Class 3000 threaded coupling and threaded fittings, when welded to a pressure vessel in accordance with Section VIII, Division I of the ASME Boiler and Pressure Vessel Code. The design temperature and other service conditions for all welding fittings are limited by various construction codes. Within these limits, The Phoenix Forge Group certifies its welding fittings identified as such, as Manufacturer's Standard per ASME Section VIII, Division I, paragraph UG-11 (a) (1).

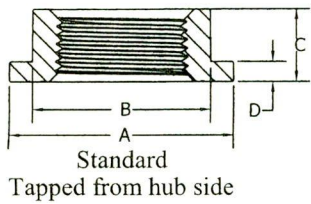
When identified with a 3000 or a 3M the maximum allowable pressure for a fitting is that computed for Schedule 160 straight seamless pipe of equivalent material, as done in ASME B36.11. The wall thickness used in such computation shall be that tabulated in ASME B36.10M for the fitting nominal pipe size and schedule 160, reduced by applicable manufacturing tolerances and other allowances (e.g., threaded allowances). Any corrosion allowance and any variation in allowable stress due to temperature shall be applied to the pipe and fitting alike.

Note that the pressure-temperature ratings obtained in this manner are for the fitting, because the fitting to pipe or vessel attachment welds are governed by design codes such as ASME Section VIII, Divisional I, paragraph UW-16, which may impose more restrictive pressure-temperature limits.

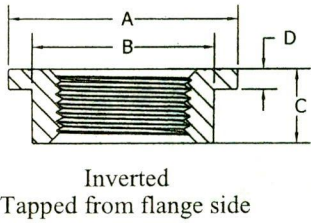
NOTICE

It should be noted that this study is supportive only of the Phoenix Forge Group Pressure Vessel Fittings' proven designs. No consent is given to use Phoenix Pressure Vessel Fittings' proof of test or mathematical calculation to support other manufacturer's products which may be similar to Phoenix designs. Furthermore, it is cautioned that the use of these tests or calculations to support other manufacturer's products may be invalid because of differences in materials, fabrication processes or dimensions.

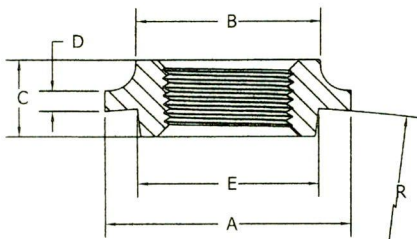
0200693



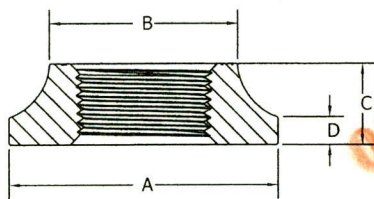
SERIES 100



SERIES 125



SERIES 150



SERIES 175

FLAT TYPE

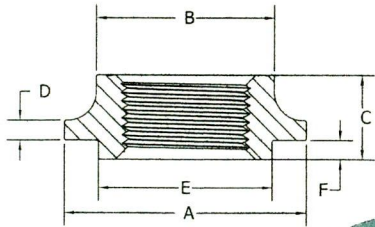
Pipe Size	Series Standard	Series Inverted	Approx Weight	A	B	C	D
1/8	100	125	0.04	1.188	.625	.281	.125
1/4	101	126	0.06	1.250	.750	.375	.156
3/8	102	127	0.08	1.375	.938	.375	.156
1/2	103	128	0.12	1.500	1.125	.579	.157
3/4	104	129	0.18	1.750	1.375	.625	.188
1	105	130	0.28	2.125	1.688	.688	.188
1-1/4	106	131	0.32	2.500	2.000	.688	.188
1-1/2	107	132	0.52	3.000	2.375	.812	.188
2	108	133	0.68	3.375	2.875	.812	.203
2-1/2	109	134	1.20	4.250	3.500	1.000	.188
3	110	135	1.44	5.000	4.125	1.000	.219
4	112	137	2.12	6.000	5.188	1.125	.250

STANDARD HEAVY CURVED TYPE WITH PILOT

Pipe Size	Series	Approx Weight	A	B	C	D	E	R
3/4	150A	0.26	2.062	1.437	.625	.196	1.344	7.000
1	150	0.36	2.375	1.781	.750	.196	1.750	15.000
1-1/4	151	0.46	2.750	2.156	.750	.196	1.875	10.000
1-1/2	152	0.58	3.125	2.406	.750	.196	2.344	15.000
2	153	0.66	3.375	2.875	.812	.196	2.719	15.000
2-1/2	154	1.12	4.250	3.438	1.000	.125	3.062	22.000
3	155	1.36	4.875	4.094	1.000	.219	3.688	22.000
4	157	1.86	5.812	5.125	1.250	.218	4.750	26.000
5	158	3.50	7.125	6.250	1.375	.250	5.812	42.000
6	159	4.88	8.250	7.375	1.437	.250	6.875	28.000
8	160	8.14	10.500	9.500	1.562	.250	9.000	48.000

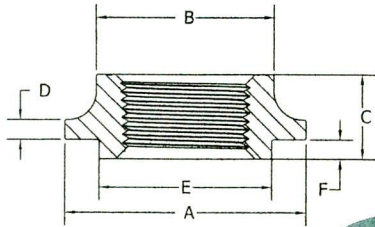
EXTRA HEAVY FLAT TYPE SERIES

Pipe Size	Series	Approx Weight	A	B	C	D
1/4	175A	0.26	2.000	1.250	.750	.191
3/8	175B	0.24	2.000	1.250	.750	.191
1/2	175	0.30	2.000	1.250	.750	.188
3/4	176	0.44	2.250	1.500	.728	.250
1	177	0.56	2.500	1.750	.750	.250
1-1/4	178	0.64	2.875	2.062	.750	.250
1-1/2	179	0.84	3.250	2.375	.750	.250
2	180	1.00	3.750	2.875	.750	.250
2-1/2	181	1.68	4.250	3.500	1.000	.250
3	182	2.92	5.500	4.250	1.000	.250
4	184	4.10	6.500	5.375	1.125	.250
5	185	7.82	8.062	6.688	1.406	.313
6	186	8.38	8.500	7.625	1.500	.406

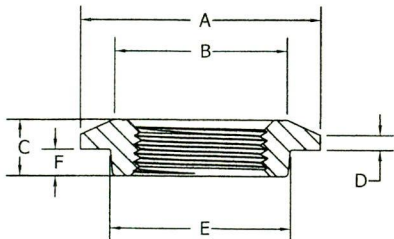


SERIES 250

ASTM A304L/316L - Manufactured to A-182 Spec



**SERIES 250
STAINLESS**



SERIES 300

STANDARD FLAT TYPE WITH PILOT

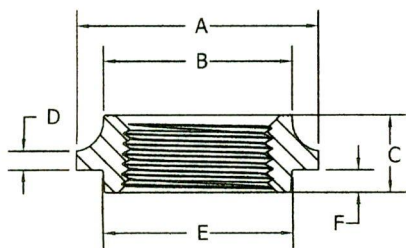
Pipe Size	Series	Approx Weight	A	B	C	D	E	F
1/8	250	0.10	1.375	.875	.469	.094	.843	.082
1/4	251	0.12	1.500	1.000	.500	.140	.968	.125
3/8	252	0.14	1.625	1.062	.500	.140	.937	.125
1/2	253	0.18	1.812	1.118	.625	.156	1.156	.156
3/4	254	0.26	2.062	1.438	.750	.156	1.343	.156
1	255	0.40	2.375	1.750	.830	.195	1.703	.188
1-1/4	256	0.46	2.500	2.125	.875	.196	1.938	.188
1-1/2	257	0.62	3.031	2.375	.875	.204	2.312	.187
2	258	0.64	3.375	2.875	.812	.188	2.688	.188
2-1/2	259	0.96	4.063	3.312	1.000	.093	3.187	.188
3	260	1.10	4.625	3.938	1.000	.219	3.688	.188
3-1/2	261	1.45	5.125	4.438	1.000	.219	4.188	.188
4	262	2.10	5.812	4.938	1.250	.219	4.750	.188

STAINLESS STEEL FLAT TYPE WITH PILOT

Pipe Size	Series	Approx Weight	A	B	C	D	E	F
1/4	251	0.12	1.500	1.000	.500	.140	.968	.125
3/8	252	0.14	1.625	1.062	.500	.140	.937	.125
1/2	253	0.18	1.812	1.118	.625	.156	1.156	.156
3/4	254	0.26	2.062	1.438	.750	.156	1.343	.156
1	255	0.40	2.375	1.750	.830	.195	1.703	.188
1-1/4	256	0.46	2.500	2.125	.875	.196	1.938	.188
1-1/2	257	0.62	3.031	2.375	.875	.204	2.312	.187
2	258	0.64	3.375	2.875	.812	.188	2.688	.188
3	260	1.10	4.625	3.938	1.000	.219	3.688	.188

BOILER FLANGE WITH PILOT

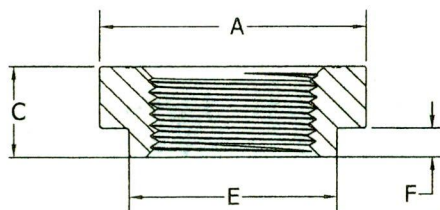
Pipe Size	Series	Approx Weight	A	B	C	D	E	F
1/8	300	0.08	1.312	.812	.406	.094	.875	.125
1/4	301	0.08	1.312	.812	.406	.094	.875	.125
3/8	302	0.12	1.438	1.062	.469	.094	1.188	.188
1/2	303	0.14	1.625	1.188	.468	.140	1.125	.188
3/4	304	0.20	2.000	1.375	.468	.140	1.312	.188
1	305	0.26	2.250	1.625	.531	.140	1.687	.250
1-1/4	306	0.30	2.562	1.938	.562	.140	1.938	.250
1-1/2	307	0.42	2.937	2.312	.578	.156	2.250	.250
2	308	0.46	3.375	2.750	.593	.156	2.625	.250



SERIES 380

LIGHTWEIGHT FLAT TYPE WITH PILOT

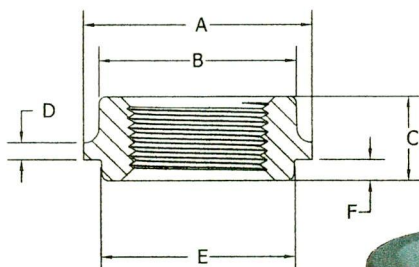
Pipe Size	Series	Approx Weight	A	B	C	D	E	F
1/8	380	0.06	1.188	.750	.406	.094	.750	.125
1/4	381	0.06	1.188	.875	.438	.094	.750	.156
3/8	382	0.06	1.312	.938	.438	.094	.938	.156
1/2	383	0.08	1.438	1.063	.469	.094	1.063	.188
3/4	384	0.10	1.625	1.250	.468	.156	1.375	.156
1	385	0.20	2.000	1.562	.641	.156	1.562	.188
1-1/4	386	0.26	2.375	1.937	.641	.156	1.937	.188
1-1/2	387	0.32	2.688	2.188	.641	.156	2.188	.188
2	388	0.36	3.125	2.625	.734	.156	2.625	.250



SERIES 390

MODIFIED LIGHTWEIGHT FLAT TYPE WITH PILOT

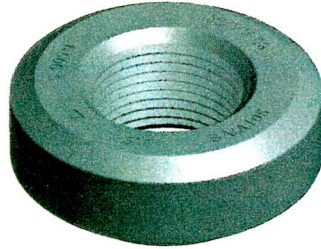
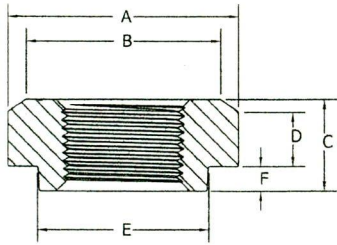
Pipe Size	Series	Approx Weight	A	C	E	F
1/4	391	0.12	1.438	.406	.938	.125
3/8	392	0.12	1.438	.438	.938	.156
1/2	393	0.12	1.438	.469	1.062	.188
3/4	394	0.14	1.625	.531	1.375	.250
1	395	0.28	2.000	.688	1.316	.219
1-1/4	396	0.36	2.375	.688	1.938	.250
1-1/2	397	0.50	2.688	.750	2.188	.250
2	398	0.60	3.125	.781	2.625	.250



SERIES 450

TRIMMED FLAT TYPE WITH PILOT

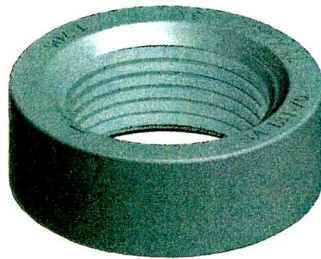
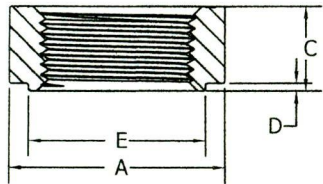
Pipe Size	Series	Approx Weight	A	B	C	D	E	F
3/8	452	0.10	1.312	1.063	.500	.156	.968	.125
3/4	454	0.18	1.750	1.438	.656	.156	1.344	.156
1	455	0.32	2.031	1.750	.750	.156	1.718	.187
1-1/2	457	0.46	2.687	2.375	.750	.188	2.313	.188
2	458	0.62	3.125	2.875	.906	.250	2.688	.250



SERIES 500

L.P.G. FLANGE WITH PILOT

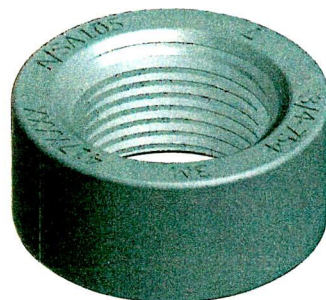
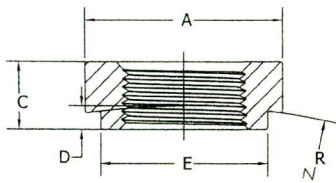
Pipe Size	Series	Approx Weight	A	B	C	D	E	F
3/4	504	0.40	1.875	1.438	.875	.500	1.500	.250
1	505	0.48	2.125	1.656	.906	.500	1.750	.250
1-1/4	506	0.54	2.375	2.000	.937	.560	2.000	.250



SERIES 700

COUPLING TYPE FLANGE WITH PILOT

Pipe Size	Series	Approx Weight	A	C	D	E	R
1/4	701	0.14	1.188	.562	.062	.921	NA
3/8	702	0.12	1.188	.562	.062	.921	NA
1/2	703	0.10	1.250	.562	.062	.921	NA
3/4	704	0.14	1.500	.563	.063	1.172	NA
1	705	0.20	1.750	.688	.063	1.437	NA
1	705-7R	0.30	2.000	.688	.238	1.688	7.000
1-1/4	706-7R	0.38	2.375	.688	.250	1.938	7.000
1-1/4	706	0.28	2.125	.688	.125	1.812	12.000
1-1/2	707	0.40	2.500	.750	.218	2.188	12.000
2	708	0.56	3.000	.781	.218	2.562	12.000
2-1/2	709	1.24	3.750	1.000	.188	3.125	18.000
3	710	1.36	4.250	1.063	.188	3.812	18.000

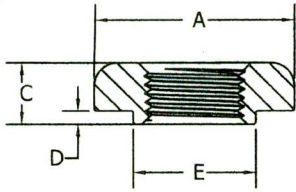


SERIES 750

COUPLING TYPE FLANGE

Pipe Size	Series	Approx Weight	A	C
1/4	751	*	1.000	0.688
3/8	752	*	1.188	0.688
1/2	753	.16	1.250	0.688
3/4	754	*	1.500	0.688
1	755	*	1.750	0.781
1-1/4	756	*	2.250	0.813
1-1/2	757	.57	2.500	0.813
2	758	.81	3.000	0.875
2-1/2	759	*	3.620	1.312
3	760	2.35	4.250	1.375
4	762	4.37	5.500	1.500

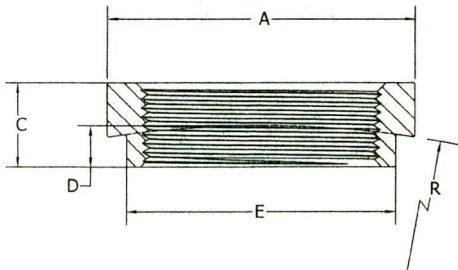
080692.91



SERIES 950

COMPOSITE FLAT FLANGE WITH PILOT

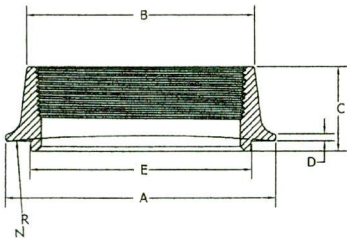
Pipe Size	Series	Approx Weight	A	C	D	E
1/4	951	0.20	1.625	.500	.109	1.000
1/2	953	0.18	1.625	.500	.109	1.000



SERIES 958 R

COMPOSITE CURVED FLANGE WITH PILOT

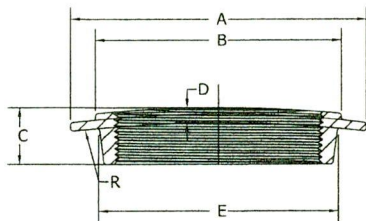
Pipe Size	Series	Approx Weight	A	C	D	E	R
1-1/2	957	0.56	2.688	.781	.266	2.266	7.500
2	958	0.50	3.000	.828	.406	2.625	10.000



HI-FIVE

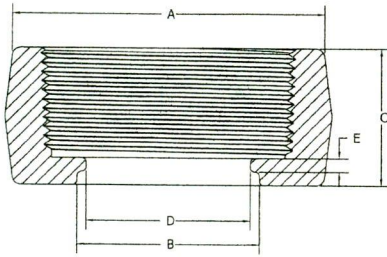
Pipe Size	Series	Approx Weight	A	B	C	D	E	R
5	158-A	5.00	7.125	6.000	2.250	.188	5.812	42.000

NOTE: Standard Tolerances do not apply.



LOW PROFILE

Pipe Size	Series	A	C	D	E	R
4	875	6.312	1.225	.328	5.250	26.000
5	878	7.312	1.375	.375	6.375	42.000



MONITORING FLANGE

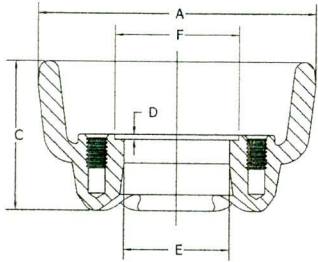
Pipe Size	Series	Approx Weight	A	B	C	D	E
3	837	3.68	4.250	2.500	1.875	2.250	.187

3" NPT inside top.
Bottom bore to suit 2" Schedule 40 pipe.
NOTE: Standard Tolerances do not apply.

Forged Float Gage Adapters

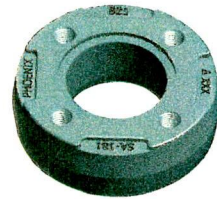
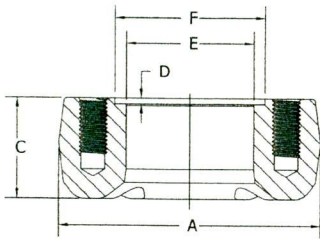
Specify Phoenix Float Gage Adapters:

* Meets ASME SA-181-70 * Markings on top surface * Permanent Traceability



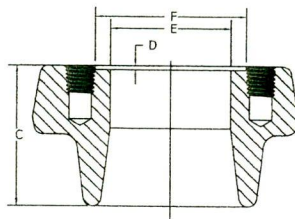
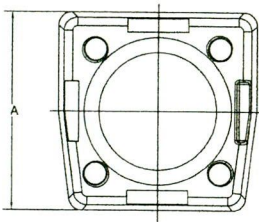
JUNIOR RECESSED

Series	Approx Weight	A	C	D	E	F
820	1.88	3.531	1.906	.062	1.340	1.578



JUNIOR DONUT

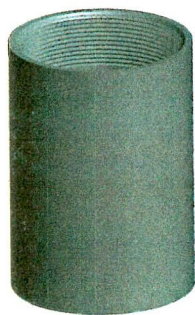
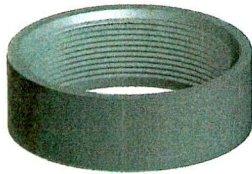
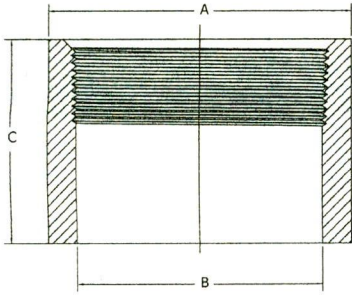
Series	Approx Weight	A	C	D	E	F
821	1.12	2.750	1.062	.062	1.340	1.578



SENIOR

Series	Approx Weight	A	C	D	E	F
826	2.04	2.812	1.968	.062	1.670	2.094

HEAVY WALL T.O.E. STRUCTURAL COUPLINGS 2" - 8"



1-800-693-92

Material Specification:
DOM/Seamless Tubing
Meets A-513A & A-519
Grade SAE 1026

- Inquire about:
- Custom Lengths
 - Special Threading
 - Full Couplings

SERIES A-FULL COUPLINGS

Pipe Size	Series	Approx Weight	Min Wall	A	B	C
3	3-845A	5.26	.480	4.250	3.250	3.250
4	3-847A	7.20	.480	5.250	4.250	3.500
5	3-848A	8.96	.470	6.250	5.250	3.750

SERIES B-HALF COUPLINGS

Pipe Size	Series	Approx Weight	Min Wall	A	B	C
3	3-845B	2.36	.480	4.250	3.250	1.562
4	3-847B	3.26	.480	5.250	4.250	1.687
5	3-848B	3.84	.470	6.250	5.250	1.750
6	3-849B	6.16	.545	7.500	6.250	1.875
8	3-850B	10.64	.673	9.750	8.250	2.000

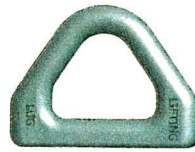
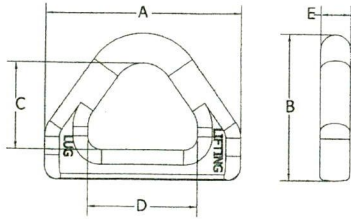
SERIES C-FIREGUARD COUPLINGS

Pipe Size	Series	Approx Weight	Min Wall	A	B	C
2	3-843C	4.88	.421	3.000	2.125	5.000
3	3-845C	8.16	.480	4.250	3.250	5.000
4	3-847C	10.40	.480	5.250	4.250	5.000
5	3-848C	12.24	.470	6.250	5.250	5.000
6	3-849C	18.10	.545	7.500	6.250	5.000
8	3-850C	28.36	.673	9.750	8.250	5.000

SERIES D-FIREGUARD COUPLINGS

Pipe Size	Series	Approx Weight	Min Wall	A	B	C
2	3-843D	5.70	.375	2.875	2.125	7.000
3	3-845D	8.36	.375	4.000	3.250	7.000
4	3-847D	10.62	.375	5.000	4.250	7.000
6	3-849D	14.74	.375	7.000	6.250	7.000

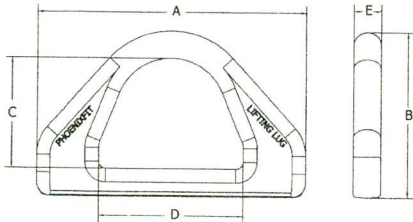
LIFTING LUGS



MINI SERIES 2-898-MIN

Series	Approx Weight	A	B	C	D	E
2-898-MIN	0.30	2.687	2.000	1.188	1.500	.406

Maximum load capacity per lug: 4850 lbs.

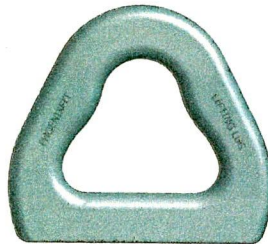
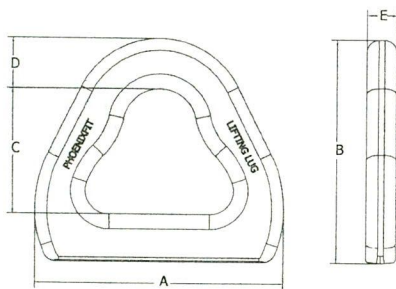


SMALL SERIES 2-900-LUG

Series	Approx Weight	A	B	C	D	E
2-900-LUG	0.90	4.875	3.000	2.000	2.609	.500

Maximum load capacity per lug: 6800 lbs.

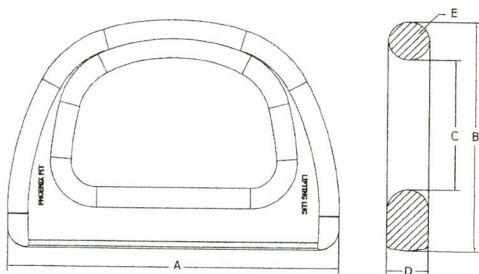
*Available in 304L



MEDIUM SERIES 2-899-MLL

Series	Approx Weight	A	B	C	D	E
2-899-MLL	2.38	5.250	4.718	2.618	1.100	.625

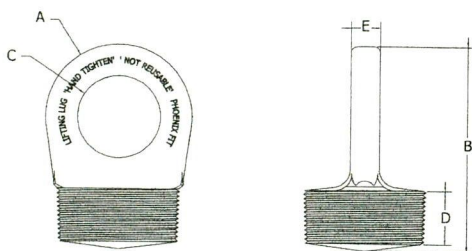
Maximum load capacity per lug: 20,000 lbs.



LARGE SERIES 2-901-LLL

Series	Approx Weight	A	B	C	D	E
2-901-LLL	6.26	8.000	5.531	3.125	1.000	.906

Maximum load capacity per lug: 16,500 lbs.



2" NPT THREADED SERIES 3-903-2-TLL

Series	Approx Weight	A	B	C	D	E
3-903-2-TLL	2.08	R 1.405	4.000	R .796	1.000	.562

Maximum load capacity per lug: 11,450 lbs.

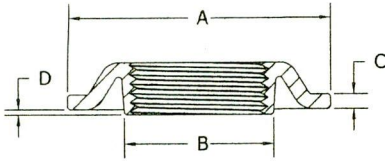
4" NPT THREADED SERIES 3-902-TLL

Series	Approx Weight	A	B	C	D	E
3-902-TLL	9.36	R 2.500	6.341	R 1.500	1.000	1.000

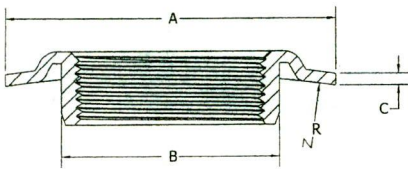
Maximum load capacity per lug: 28,000 lbs.



Pressed Steel Fittings



FLAT TYPE*						
Pipe Size	Series	Approx Weight	A	B	C	D
1/2	613	0.08	1.745	0.900	.134	0.160
3/4	614	0.16	2.360	1.110	.134	0.140
1	615	0.14	2.346	1.372	.134	0.210
1-1/4	616	0.20	2.860	1.742	.134	0.333
1-1/2	617	0.32	3.653	1.942	.118	0.060
2	618	0.32	3.730	2.460	.130	0.365
2	648	0.44	3.840	2.480	.156	0.545



CURVED TYPE						
Pipe Size	Series	Approx Weight	A	B	C	R
1-1/2	637	0.24	3.265	1.954	.118	13
2	638	0.32	3.670	2.460	.130	13
2	658	0.44	3.825	2.480	.156	14
2	668	0.44	3.800	2.480	.156	11

Thread Protectors

Thread Protectors are manufactured from tin plated steel for durability, flexibility and corrosion resistance.



Pipe Sizes	1/8", 1/4", 3/8", 1/2", 3/4", 1", 1 1/4", 1 1/2", 2", 2 1/2", 3", 3 1/2", 4", 5", 6", 8"
------------	--

The Isolator[®] Bushing



The Isolator[®] from Phoenix Forging offers significant advantages over other anode protection devices used in underground tanks.

- Unique design minimizes cross-threading.
- Extremely lightweight, resilient and easy to install.
- Slightly offset design for quick and easy flange entry.
- No-burr construction for a smoother, tighter fit.
- Oversized, reinforced tabs for extra strength during installation.
- Top quality flanges and bushings from one source.

The Following are Registered Trademarks of The Phoenix Forge Group

Int. Cls.: 6 and 40
Prior U.S. Cls.: 13, 103, and 106

United States Patent and Trademark Office

Reg. No. 1,783,836
Registered July 27, 1993

TRADEMARK
SERVICE MARK
PRINCIPAL REGISTER



PHOENIX FORGING COMPANY INC.
(PENNSYLVANIA CORPORATION)
FRONT AND CHAPEL STREETS
CATASAUQUA, PA 18032

TO THE ORDER AND SPECIFICATION OF
OTHERS, IN CLASS 40 (U.S. CLS. 103 AND 106).
FIRST USE 0-0 1943; IN COMMERCE 0-0-1943.

FOR: FORGED METAL PRODUCTS; NAMELY
METAL TANK FLANGES AND PIPE CONNECT-
ORS, IN CLASS 6 (U.S. CL. 13).

FIRST USE 0-0-1943; IN COMMERCE 0-0-1943.
FOR: FORGING METAL GOODS

SER. NO. 74-234, 442, FILED 12-31-1991.
AMOS T. MATTHEWS, JR., EXAMINING
ATTORNEY

OTHER REGISTERED TRADEMARKS:

PHOENIXFIT®
HYDRO FLIGHT®
HY-PLUS®
HI-FIVE®
ISOLATOR® BUSHING
TRANS-O-CON®

 PHOENIX FORGING COMPANY INC.

 PHOENIX FITTINGS COMPANY

 PHOENIX HOTFORM COMPANY

 PHOENIX HOTFORM COMPANY,
ALTERNATE SYMBOL



FORGED WITH PRIDE IN THE USA

TRADE ASSOCIATIONS:

PRESSURE VESSEL MANUFACTURERS ASSOCIATION
STI/SPFA—STEEL TANK INSTITUTE/STEEL PLATE
FABRICATORS ASSOCIATION
THE PVF ROUNDTABLE
FORGING INDUSTRY ASSOCIATION
AMERICAN SUPPLY ASSOCIATION
INDUSTRIAL PIPING DIVISION—ASA
STAFDA—SPECIALTY TOOL & FASTENERS
DISTRIBUTION ASSOCIATION
AMERICAN HARDWARE MANUFACTURERS
ASSOCIATION
ASME—AMERICAN SOCIETY OF MECHANICAL
ENGINEERS
ASTM—AMERICAN SOCIETY TESTING MATERIALS
MSS—MANUFACTURING STANDARDIZATION SOCIETY
SME—SOCIETY OF MANUFACTURING ENGINEERS

SERVICE MARK:

COMMANDING A HIGHER STANDARDSM